

New Woodland High School

Woodland Public Schools



Aerial view 03.01.2014

Construction Management Report

March 2015

New Woodland High School
1500 Dike Access Road

Project Status

Construction Progress:

Site

- Curb and parking area paving is complete on north parking area.
- Baseball and softball fencing is underway.
- Football field final preparation for the synthetic turf is under way.
- Robinson Road improvements are mostly complete. Dike access Road improvements will begin this month.
- Connections from roof drains to storm system are complete.
- The courtyard paving and concrete benches are complete.
- Perimeter fencing is underway

Building

- North Classroom Wing
 - Drywall/taping is complete
 - Wood paneling is complete.
 - Painting is complete.
 - Flooring is underway.
 - Rough Plumbing is complete.
 - HVAC duct work is complete.
 - Fire sprinkler piping is complete.
 - Low voltage finish is underway.
- South classroom Wing
 - Drywall/taping is complete
 - Painting is complete.
 - Wood paneling is complete
 - Rough Plumbing is complete.
 - HVAC duct work is complete.
 - Fire sprinkler piping is complete.
 - Rough electrical is complete.
 - Electrical is complete
 - Low voltage finish is underway.
- Commons/Central Area
 - Drywall installation is complete

- Drywall/taping is complete
- Painting is underway.
- Rough Plumbing is complete.
- HVAC duct work is mostly complete.
- Fire sprinkler piping is complete.
- Rough electrical is underway.
- Gyms/Locker Rooms
 - Exterior trim/siding is underway
 - Metal roofing is complete.
 - Painting is underway.
 - Fire sprinkler piping is complete.
 - HVAC duct work is complete.
 - HVAC units are installed
 - Rough electrical is complete.
- Grandstand
 - Plumbing and electrical are complete.
 - CMU base is ready for steel superstructure
 - Steel structure is being fabricated.

Schedule:

- The project’s date of Substantial Completion is July, 17 2015.
- Time expended: 475 days, 80%
- The project is on schedule. Current schedule summary below:

EXEC-1015	Owner Notice to Proceed	0	20-Nov-13 A	
EXEC-1020	Total Project Duration (Calendar Days)	547	02-Dec-13 A	09-Jul-15
EXEC-1030	Start Construction	0	02-Dec-13 A	
EXEC-1055	Sitework/Earthwork/Utilities	385	02-Dec-13 A	19-May-15
EXEC-1057	Material & Equipment Procurement	92	31-Dec-13 A	26-Jun-14 A
EXEC-1060	High School Superstructure	125	13-Jan-14 A	14-Aug-14 A
EXEC-1140	Gymnasium Superstructure & Enclosure	189	30-Jan-14 A	20-Oct-14
EXEC-1065	High School Building Enclosure	158	12-May-14 A	12-Dec-14
EXEC-1145	Athletic Fields & Buildings	228	29-May-14 A	01-Jul-15
EXEC-1070	1st Level North Classroom Wing Buildout	160	03-Jun-14 A	20-Feb-15
EXEC-1075	2nd Level North Classroom Wing Buildout	160	09-Jun-14 A	28-Jan-15
EXEC-1090	2nd Level South Classroom Wing Buildout	160	02-Jul-14 A	03-Mar-15
EXEC-1080	1st Level South Classroom Wing Buildout	160	03-Jul-14 A	13-Mar-15
EXEC-1100	Commons Area Buildout	160	28-Aug-14 A	16-Apr-15
EXEC-1110	Music & Choir Room Buildout	166	12-Sep-14	07-May-15
EXEC-1120	Culinary Arts Lab Buildout	171	26-Sep-14	29-May-15
EXEC-1130	Kitchen & Servery Buildout	181	10-Oct-14	26-Jun-15
EXEC-1150	Gymnasium, Locker Rooms & Fitness Buildout	175	21-Oct-14	29-Jun-15
EXEC-1160	Project Commissioning & Closeout	195	02-Dec-14	04-Sep-15
EXEC-1165	Substantial Completion	0		09-Jul-15
EXEC-1170	Final Completion	0		07-Sep-15*



Financial Review:

Construction Contract Amount:	\$43,538,000	
<u>Change Orders to-date:</u>	<u>\$1,493,663</u>	3.5%
Total Contract amount:	\$45,031,663	
Total Billed/Completed to-date:	\$36,641,936	81%
Pending Change Orders:	\$0	CO xx
Potential Change Order Tracking:		
• Open CCD(s) T&M and approved COR's:	\$144,382	
• Open Change Order Requests:	\$91,501	
Contingency Balance:	\$398,636	

Claim Issues

- Unit Cost/Allowance Adjustment
 - No change - The contractor has submitted Change Order Request #106 for a bid error on the unit costs and allowances. They are asking to have the allowance adjusted based on lower unit costs. Adjustment should be (\$221,201) and they have asked for (\$113,883) for a new difference of \$107,318. District has previously informed the GC that they will reject this COR.
- Geogrid/Footing Conflict
 - No Change - Contractor has been paid for the additional costs. The architect has been notified of impending claim. School district consulting with district's attorney.

Photos:

Additional photos available via web camera access: www.dwpwebcams.com/whs/desktop.htm



South Classroom wing



Main Entry and Library



Passenger drop area at Front Entry



North Parking Lot



Greenhouse and Courtyard



Scoreboard at Football



Music Room



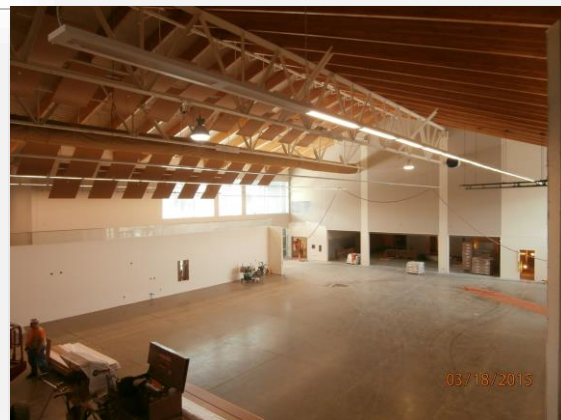
Second Floor Concourse



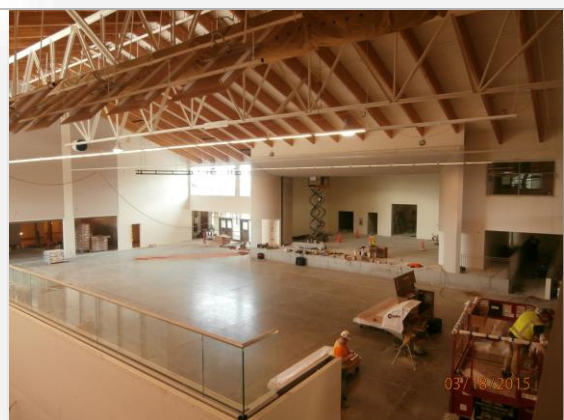
Typical Science Room



Second Floor Concourse



Commons



Commons



Library Checkout Desk



Library



Food Service Kitchen/Servery



Main Gymnasium



Auxiliary Gymnasium



South Shared Activity Area